

Borderline

Annual Report 2003



SUPPORTING HOMELESS
SCOTS IN LONDON

Chairman's report

Borderline's move to new offices is but one of the challenges facing us over the coming year.

Our main concern is to be able to continue to provide the level of service that our clients need. Changes in Government policy and changes in implementation of that policy by Westminster City Council mean that we have constantly to be ready to adapt our practices and policies.

We also need sufficient funds to be able to provide help to more than 1,000 clients each year. Borderline is immensely grateful to all who support it, but we do need more money in order to be able to maintain our services. Fundraising is time-consuming and can often be frustrating. This report describes some ways in which Borderline has been helped over the last year. If there is any

way you think you can help, do let us know.

Our new offices, which were "opened" by the Moderator of the General Assembly of the Church of Scotland, Rt Rev Professor Iain Torrance, in December 2003, are even closer to Victoria Coach Station, the main arrival point for our clients in London. They provide light and airy interview rooms for our clients as well as office space for our five staff. (We have also been able to benefit from falling commercial rents to make savings.)

The Moderator was keen to know how we would let our clients know of our change of address. We were able to tell him that they will hear by word of mouth. Most of our clients find out about Borderline from previous or existing clients, surely the best endorsement that we could have.

Elizabeth P Fox

Director's report

This has been a year of challenge and change – we said goodbye to Nigel Barton and Vicky Jones, two of our Advice Workers, and welcomed Mark Murton and Sarah Nugent. When our lease ended, we also said farewell to 48 Grosvenor Gardens and moved to new premises in Belgrave Road. As a new team in new premises, we are looking forward to continuing Borderline's successful work with many clients. We are determined to maintain our much-needed services for our clients, so have tried to cut other costs.

We also face the challenge of new housing legislation in Scotland – whilst we welcome the legislation as progressive, we need to keep abreast of how it might affect our clients, especially those trying to resettle permanently in Scotland.

Here in London, local authorities are taking a harder line with rough sleeping and other forms of street activity. Cllr Simon Milton, Leader of Westminster Council, described the approach as "a robust one". Westminster City Council is planning to withdraw services for rough sleepers from the streets and relocate them into designated hostels, shelters and day-centres. In the run up to the switch, planned for October 2004, there will be a year-long drive by the newly created 'Rapid

Intervention Team' to reduce the number of rough sleepers as far as possible. We are seeking to work closely with all those involved and are monitoring the effect this policy has on our clients.

We thank you for your support over the last twelve months, and ask for your continued co-operation, ambassadorship and goodwill in the forthcoming year as we continue to support homeless and insecurely housed Scots in London.

Eileen J Ward



The Rt Rev Professor Iain Torrance, Moderator of the General Assembly of the Church of Scotland, chats with a Borderline client, Richard Gilmour, observed by Sally Brown, Client Services Co-Ordinator.

How does Borderline help our clients?

Many of our clients come to London, not quite believing the streets are paved with gold, but hoping to find employment and have a better life.

Mike had been living in B & B accommodation on the South Coast, but gave this up to come to London where he believed he had a guaranteed job. The job fell through and he found himself on the streets. He came to Borderline because he had been helped by us in the past, and we were able to refer him to the Westminster Street Services Team. After a few days he was placed in a hostel.

At Borderline we believe it is essential to work in partnership with other organisations to help those who are homeless. Together we make a difference.

Although a high proportion of our clients come from the central belt of Scotland, people from other parts of Scotland also seek our help. George was from the Western Isles and came to London when he lost his job. He was also trying to cope with an alcohol problem.

We were looking for hostel accommodation for this client, and after a short time we found him a place in the Clapham area. He was delighted to have a roof over his head and to have some time and space to deal with his problems.

James had lived abroad most of his life, and had spent many years working on boats around Northern Europe. Unfortunately he encountered some problems and was deported. He came to London with nowhere to live, and a fellow Scot told him about Borderline.

James expressed a wish to return to Aberdeen and so we contacted Aberdeen City Council. They advised our client that as he had a sister in St Albans, he no longer had any connection with Scotland and should go to her. This was not what James wanted and so we contacted the Scottish Cyrenians. They indicated they could help if he came to Scotland and so Borderline paid for a travel warrant. The Cyrenians helped our client to make an application to the Council for accommodation and he was housed straight away.

Borderline has developed many links with

charitable organisations in Scotland and therefore is able to deal more quickly and effectively with the challenging situations clients are in.

It is a compliment to Borderline that many of our clients and former clients recommend our services. This was the case with Richard. He was originally staying in Fife in a B & B provided by the local council. He left to take up work in the North of England. However, this fell through after two weeks and so he came to London.

It was there that a fellow Scot told him to contact Borderline. He was hesitant at first to do this, but eventually made contact. Previously Richard had spent time in hostels in a particular London borough and we contacted the council to see if accommodation was available. Unfortunately, our client's possessions had been stolen and, as he had no means of identification, we obtained his birth certificate to enable the council to carry out its investigations. By this time Richard decided he could not cope any longer on the streets and we found him hostel accommodation.

Borderline staff are committed to supporting a client's individual needs, and helping them make the best decisions for their welfare and future. Each night hundreds of people of all ages sleep rough. Borderline is one of many organisations trying to help and support those people who have often been rejected by society.

Fiona came to Borderline as she had been sleeping on the streets for two weeks. She was very vulnerable and had not been eating. She was supposed to be taking anti-depressants but as she had no doctor in London, her supply had run out.

Borderline contacted the Street Services Team who put her in a B & B for a night, before finding suitable hostel accommodation. However, Fiona decided she wanted to go back to Scotland so Borderline provided her with a travel warrant.

Many people are attracted to London because of the excitement of living in a big city and they believe it will be easier to find work there. This is not the case, and many of Borderline's clients arrive in the city with a promise of work that does not materialise or falls through after a short time.

Two young clients contacted Borderline facing just this situation. Also, their accommodation with friends had fallen through. They had been referred to us through Heathrow Travel, having come via Heathrow Airport. They had no money or means of getting back home, so Borderline

issued travel warrants for the coach and also gave them the address of a hostel.

Borderline's services offer help to those who are vulnerable and give support to people who despair of finding a solution to their problems.



Sally Brown, Client Services Co-Ordinator, with David Purdon in one of our new Interview Rooms. David is a former client who now volunteers at Borderline and is training to be an Advice Worker.

Hostels

Borderline is privileged to have good links with a number of hostels; we help fund bedspaces at two particular hostels, the YMCA in Waltham Forest and Broadway 160 in Shepherd's Bush.

Waltham Forest YMCA provides accommodation for 158 single homeless people, usually aged 18-30. It "aims to provide a safe and secure environment in the hostel, characterised by Christian values, through the provision of adequate support and supervision". Staff offer advice on benefits as well as informal counselling and help in accessing other local support and health services. The hostel offers a range of recreational and social activities, and sports facilities.

The hostel has 23 bedsits for residents moving on from the hostel as the first step towards independent living. This hostel is one of the few that is able to let residents stay on for a while once they obtain employment, which offers stability and a chance to sort themselves out financially.

Borderline placed 25 male clients in the YMCA between April 2002 and March 2003. Subsequently we helped six of these clients move into their own tenancies, either in Council or Housing Association properties.

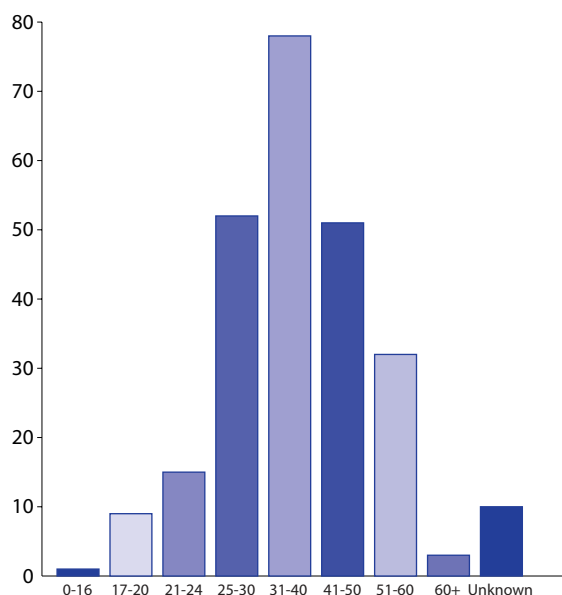
Broadway 160 is a 31-bed direct access hostel for single homeless people (particularly those sleeping rough) who have medium support needs around mental health, substance misuse and/or offending behaviour. The project can only accept people who are in receipt of, or eligible for, benefits and who have proof of identity. Staff provide resettlement advice to all residents. Accommodation is in single rooms, with nine bedspaces for women and 22 for men. There are two lounges, one women-only and one mixed. Residents also have access to computer facilities.

Broadway accommodated 18 Borderline clients between April 2003 and March 2003. Of these, 17 were male and one was female, with an age range from 16 to over 50.

Who comes to Borderline?

Borderline works with over 1,000 clients each year. Of these, around 250 are new to us. It's interesting to see who these new clients are: in the period April 2002 to March 2003, nearly half came from Glasgow and most (over 85%) were male.

Age of new clients



New Clients' Origin

	Male	Female
Glasgow	110	15
Edinburgh	25	3
Dundee	15	3
Aberdeen	8	1
Aryshire	8	2
Lanarkshire	13	3
Argyll & Bute	1	
Dumfries & Galloway	2	
Dumbartonshire	1	
Falkirk	7	2
Fife	4	1
Lothian	3	
Perth & Kinross	3	1
Renfrewshire	5	1
England	10	2
Unknown	2	
Total	217	34
Overall total:	251	

Those who come to Borderline for help have often lost any means of identification; through good working relationships with partner agencies in England and an excellent relationship with the General Register Office for Scotland, we are able to obtain Birth Certificates for our clients at a reasonable price, and with speed. We issued 216 certificates between April 2002 and March 2003. One of the main uses of these certificates is for identification purposes with the Department for Work and Pensions.

Other clients come to us because they need help with travel to Scotland. For the year April 2002 to March 2003 we issued 189 Travel Warrants:

Crisis Single	125
Crisis Return	16
Planned Single	15
Planned Return	33

Clients sometimes arrive with no toiletries or no warm coat for the winter, for example. We can issue clothing and toiletries, which have either been generously donated or purchased cheaply through charity schemes.

Some of our clients approach us when they have found accommodation (often with Borderline's help) as they need assistance in purchasing furniture or kitchen goods. Through the generosity of other groups such as St Columba's Benevolence Committee and the Royal Scottish Corporation, we are able to access grants for them. Between April 2002 and March 2003 we distributed 33 such 'large grants'; we also gave out a number of 'small grants' for emergency subsistence and local travel fares for clients to get to interviews and hostels. We work closely with furniture recycling initiatives such as CREATE and The Shaftesbury Resource Centre.

How you can help Borderline

We are always grateful for funds, and this year have enjoyed some particularly special donations, which might give you an idea of how you can help Borderline help our clients.

On the wonderful occasion of their marriage, two friends asked for donations to their favourite charities instead of gifts, and Borderline was delighted to be one of the beneficiaries.

A supporter celebrated his 40th birthday by inviting his friends to a wine tasting and donating the proceeds to Borderline!

Two couples celebrating their Silver and Ruby Wedding Anniversaries generously requested

donations to Borderline in lieu of presents.

The Surge Youth Group from Colinton Parish Church adopted Borderline as their charity for the year and raised a substantial amount from their Burns Night Supper and other activities. They say that by supporting and learning about Borderline they have become aware of some of the conditions young homeless Scots face.

If you have a special occasion to celebrate in the forthcoming year, please consider asking friends, family and colleagues to make a donation to Borderline instead of buying you a present. Whatever you give and however you raise it, we'll put the money to good use to meet the needs of our clients.

Donations

Charitable Trusts

Callendar Charitable Trust
Christian Isobel Fleming Memorial Fund
Darroch Charitable Trust
Dinning Charitable Trust
Leslie and Helen Duff Charitable Trust
William Gibson's Trust
Hope Trust
IBB Trust
Mickel Fund
Napier Fund, St Columba's Church
Ponton House Trust
Robertson Trust
Royal Caledonian Ball
Royal Scottish Corporation
Mrs Elizabeth Scott's Charitable Trust
James Wood Bequest Fund

Church Related

Balquhiddy Parish Church
Bearsden South Church Guild
Breich Valley Church Guild
Cameron Parish Church
Crown Court Church, London
Dundarn Parish Church St Fillans
East Church Woman's Guild
Eastwood Parish Church
Forgandenny Parish Church
Glens and Kirriemuir Old Parish Church
Kilmuir and Logie Easter Church
Ladies of St Andrew's Guild, Cambuslang
Langside Parish Church

Penpont, Keir and Tynron Parish Church
Proceeds from Presbytery of England Teas
St Andrew's Church of Scotland, Brussels
St Columba Church Helensburgh Guild
St Columba's Benevolence Committee,
London
St Columba's Church, London,
Burns Night Supper
St Columba's Church, London,
Scottish Dancers
Strathaven East Church Guild
Surge Youth Group / Colinton Parish Church
Thornhill Parish Church

Groups

Beechnuts Curling Club
Crown Court Church Sponsored Slim
Lunnainn Albannaich

Companies

Arcadia
Linda Laderman PR
Mgender.com Ltd
Tudor Proprietary Trading, L.L.C.

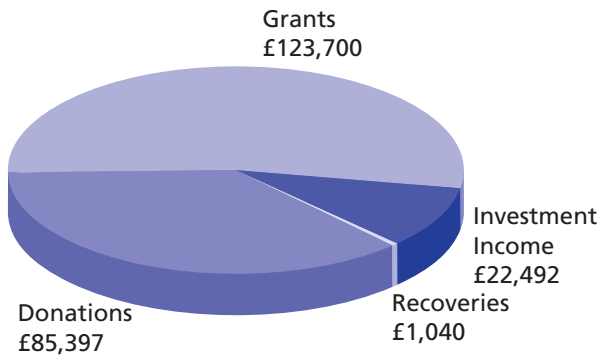
Statutory

The Scottish Executive

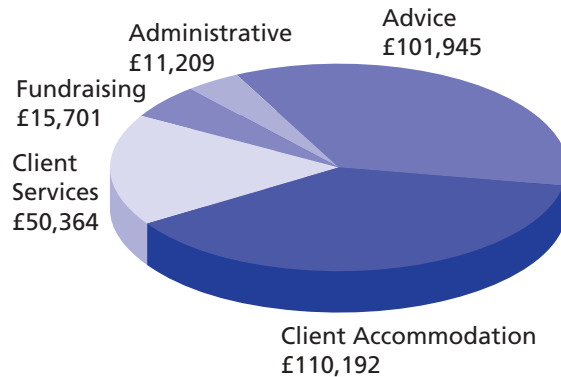
Borderline also gratefully acknowledges the generosity of our many individual donors and those who wish to remain anonymous

Finance

Breakdown of Income



Breakdown of Expenditure



Income and Expenditure

Income	£232,629
Expenditure	£289,411
Operating deficit	£56,782

Fund Balances

General Fund	£166,280
Designated Funds	£181,065
Total	£347,345

* A full financial statement is available upon request

Administration

Address

COSLAS/Borderline
7/9 Belgrave Road
London SW1V 1QB
Tel 0845 456 2190
Fax 0845 456 2199
E-mail office@borderline-uk.org
Charity No 208437

Trustees

Chairman Elizabeth Fox
Treasurer Kathleen Stevenson
(to March 2003)

Scott Black *(to March 2003)*
Rev Barry Dunsmore
Mark Laird
Yvonne McAulay
Audrey McNair *(from May 2003)*
Alan Mackie
Rev Sigrid Marten
Susan Mathewson
(from May 2003)
Rev Forbes Walker
Betsy Wilkie

The Trustees also form the Management Committee of Borderline

Staff

Director Eileen Ward
Client Services
Co-Ordinator Sally Brown
Advice Workers Nigel Barton *(to April 2003)*
Vicky Jones *(to April 2003)*
Mark Murton *(from July 2003)*
Sarah Nugent
(from November 2003)

Administrator Paul Dragoni
(from October 2003)
Edward Simpson
(to September 2003)

Volunteer David Purdon

Bankers

The Royal Bank of Scotland plc

Auditors

Daniels & Co.

Investment Advisers

Laing & Cruickshank Investment Management Limited

Borderline is run by COSLAS, the Church of Scotland London Advisory Service.

This poem was written by Angus Sinclair, a good friend of Borderline, who sadly died in October 2003. Angus had a great concern for the homeless Scots he encountered in London, trying to help them both practically and with friendship. The poem reflects Angus's love of Scotland and his great tolerance and compassion. Angus is missed by his family and friends, among whom number some of Borderline's clients.

Ben Aliskey and Glascorrie

Ben Aliskey and Glascorrie, long loved friends
Of childhood, stand forever holding hands,
Forever linked in love and sending me
Their silent welcome far more eloquent
Than any human cry could claim to be.
When I was very young I loved to climb them;
Later I promised with my bayonet
Or blood to guard them from menaces
Of tyrants. Now they simply seem to say:
"We love you, whether you are young or old,
Brave or despondent, venturing or jaded;
Whatever circumstances bring you here,
We love you as we always have – and shall."

Hon Angus Sinclair



SUPPORTING HOMELESS
SCOTS IN LONDON

COSLAS/Borderline, 7/9 Belgrave Road, London SW1V 1QB
Tel 0845 456 2190 Fax 0845 456 2199
E-mail office@borderline-uk.org
Charity No 208437